

263375

12-1-12, 13-1-12, 14-1-12, 15-1-12, 16-1-12, 17-1-12, 18-1-12, 19-1-12, 20-1-12, 21-1-12, 22-1-12, 23-1-12, 24-1-12, 25-1-12, 26-1-12, 27-1-12, 28-1-12, 29-1-12, 30-1-12, 31-1-12, 32-1-12, 33-1-12, 34-1-12, 35-1-12, 36-1-12, 37-1-12, 38-1-12, 39-1-12, 40-1-12

1枚目と同様

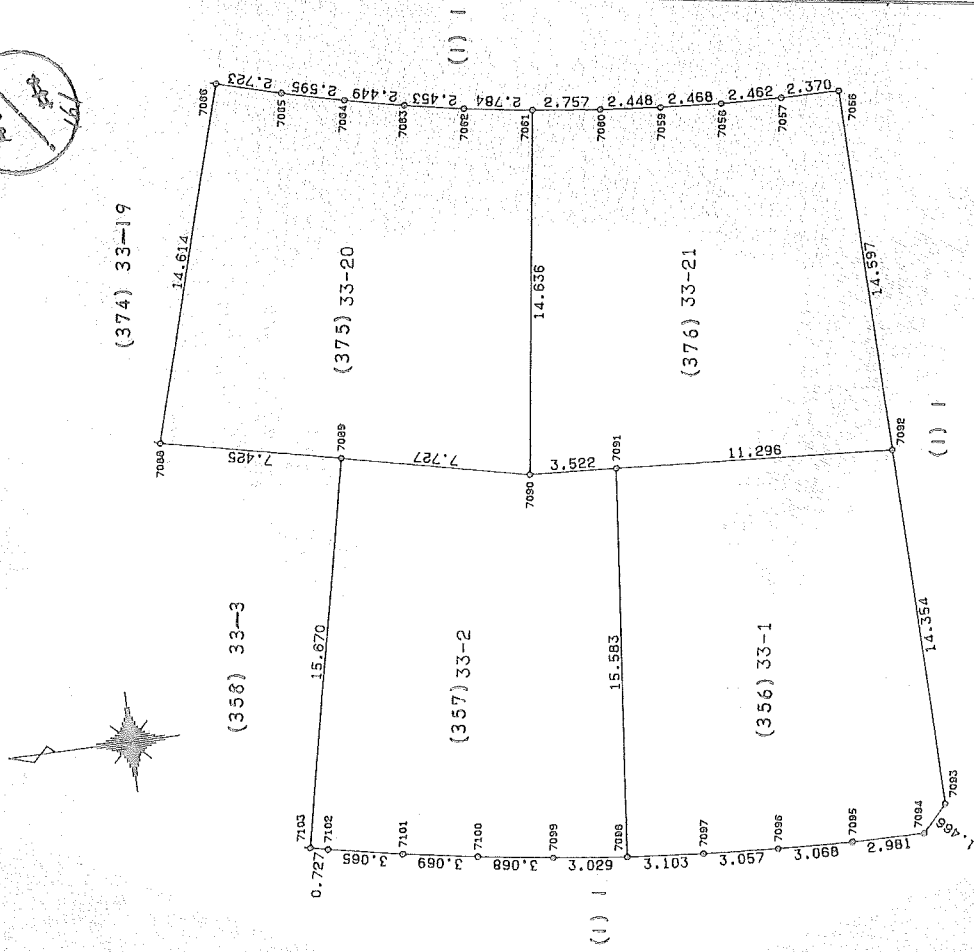
地番 (33-1, 33-2, 33-20, 33-21)

土地の所在 久居市緑が丘町二丁目

地積測量図

座標求積表

| 地番 | NO | 標識 | X | Y | 辺長 | 測線 |
|-------|-------------|-------------|-------------|-------------|------------|-------------|
| (356) | 33 | 7098 | -144920.341 | 37347.731 | | |
| | -1 | 7097 | -144923.432 | 37347.456 | 3.103 | 7098-7097 |
| | 7096 | -144926.482 | 37347.255 | 3.057 | 7097-7096 | |
| | 7095 | -144929.547 | 37347.123 | 3.068 | 7096-7095 | |
| | 7094 | -144932.528 | 37347.088 | 2.981 | 7095-7094 | |
| | 7093 | -144933.541 | 37348.148 | 1.466 | 7094-7093 | |
| | 7092 | -144933.246 | 37362.499 | 14.354 | 7093-7092 | |
| | 7091 | -144921.974 | 37363.228 | 11.296 | 7092-7091 | |
| 7098 | -144920.341 | 37347.731 | 15.583 | 7091-7098 | | |
| | | | 倍面積 | 381.354460 | | |
| | | | 面積 | 190.6772300 | ㎡ | 地積 190.67 ㎡ |
| (357) | 33 | 7103 | -144907.553 | 37349.792 | | |
| | -2 | 7102 | -144908.264 | 37349.641 | 0.727 | 7103-7102 |
| | 7101 | -144911.272 | 37349.052 | 3.065 | 7102-7101 | |
| | 7100 | -144914.299 | 37348.543 | 3.069 | 7101-7100 | |
| | 7099 | -144917.334 | 37348.097 | 3.068 | 7100-7099 | |
| | 7098 | -144920.341 | 37347.731 | 3.029 | 7099-7098 | |
| | 7091 | -144921.974 | 37363.228 | 15.583 | 7098-7091 | |
| | 7090 | -144918.458 | 37363.440 | 3.522 | 7091-7090 | |
| | 7089 | -144910.911 | 37365.098 | 7.727 | 7090-7089 | |
| | 7103 | -144907.553 | 37349.792 | 15.670 | 7089-7103 | |
| | | | | 倍面積 | 375.602879 | |
| | | | 面積 | 187.8014395 | ㎡ | 地積 187.80 ㎡ |
| (375) | 33 | 7088 | -144903.652 | 37366.659 | | |
| | -20 | 7089 | -144910.911 | 37365.098 | 7.425 | 7088-7089 |
| | 7090 | -144918.458 | 37363.440 | 7.727 | 7089-7090 | |
| | 7061 | -144920.492 | 37377.934 | 14.636 | 7090-7061 | |
| | 7062 | -144917.740 | 37378.353 | 2.784 | 7061-7062 | |
| | 7063 | -144915.329 | 37378.805 | 2.453 | 7062-7063 | |
| | 7064 | -144912.937 | 37379.329 | 2.449 | 7063-7064 | |
| | 7065 | -144910.417 | 37379.948 | 2.595 | 7064-7065 | |
| | 7066 | -144907.793 | 37380.674 | 2.723 | 7065-7066 | |
| | 7088 | -144903.652 | 37366.659 | 14.614 | 7066-7088 | |
| | | | | 倍面積 | 406.167346 | |
| | | | 面積 | 203.0836730 | ㎡ | 地積 203.08 ㎡ |
| (376) | 33 | 7090 | -144918.458 | 37363.440 | | |
| | -21 | 7091 | -144921.974 | 37363.228 | 3.522 | 7090-7091 |
| | 7092 | -144933.246 | 37362.499 | 11.296 | 7091-7092 | |
| | 7056 | -144932.958 | 37377.093 | 14.597 | 7092-7056 | |
| | 7057 | -144930.588 | 37377.115 | 2.370 | 7056-7057 | |
| | 7058 | -144928.128 | 37377.203 | 2.462 | 7057-7058 | |
| | 7059 | -144925.666 | 37377.371 | 2.468 | 7058-7059 | |
| | 7060 | -144923.228 | 37377.592 | 2.448 | 7059-7060 | |
| | 7061 | -144920.492 | 37377.934 | 2.757 | 7060-7061 | |
| | 7090 | -144918.458 | 37363.440 | 14.636 | 7061-7090 | |
| | | | | 倍面積 | 394.173136 | |
| | | | 面積 | 197.0865690 | ㎡ | 地積 197.08 ㎡ |



10.18